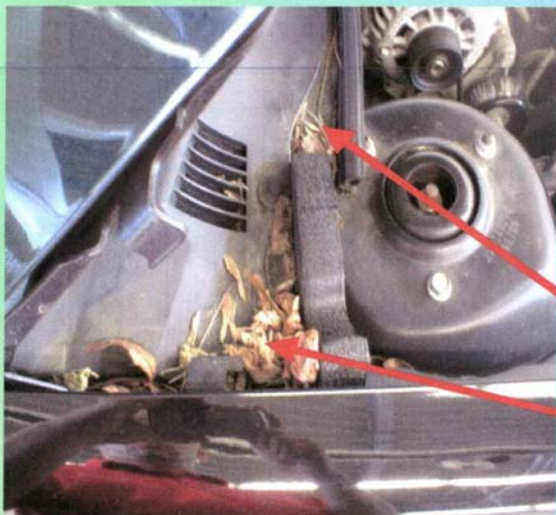


PLEASE CLEAN....

- ENGINE AND ENGINE COMPARTMENT
- THE INSIDE OF THE CAR..CARPETING FOR SOIL/MUD, PLANT MATERIAL (LEAVES, GRASS, SEEDS ETC.)



● YOUR POV WILL BE REJECTED IF IT LOOKS LIKE THIS

CLEANING YOUR POV FOR SHIPMENT TO CONUS PLEASE OBSERVE THESE IMPORTANT AREAS TO BE CLEANED



TRUNK AREA



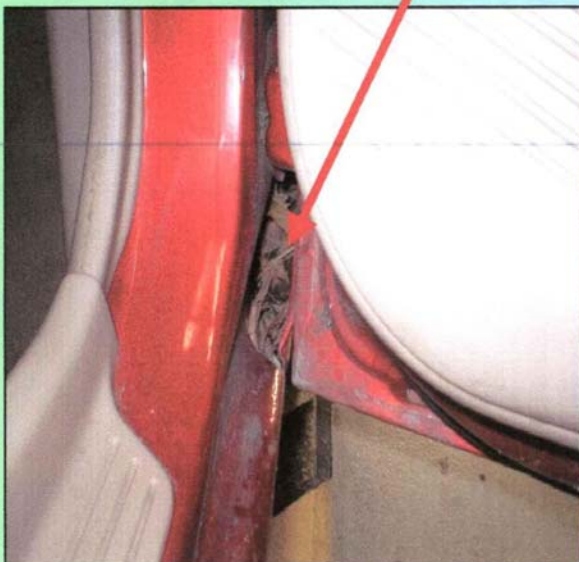
OIL OR TRANSMISSION LEAKS
WILL BE REJECTED FOR
SHIPMENT UNTIL REPAIRED

ALSO CHECK THE WINDSHIELD WIPER HOUSING AREA...MAKE SURE ALL AREAS ARE FREE OF ALL DIRT, LEAVES, GRASS AND BUGS

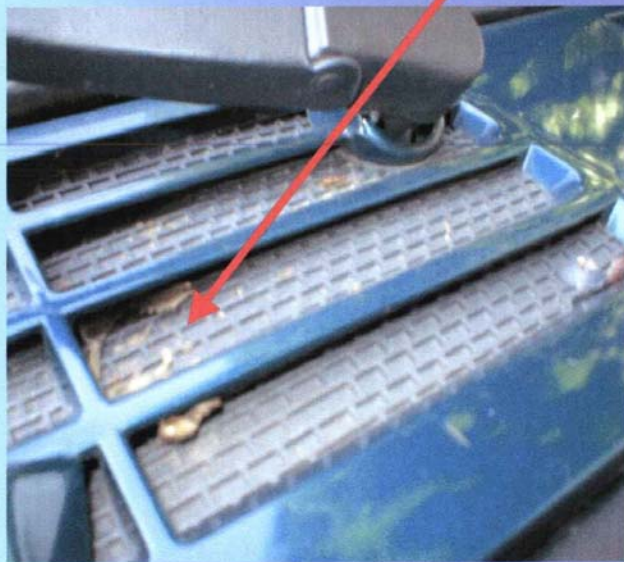
ENSURE THAT EMERGENCY BRAKE WORKS 100%



HIDDEN LEAVES BETWEEN DOOR PANELS



YOUR WINDSHIELD WIPER AREA SHOULD BE FREE OF ANY SOIL, LEAVES, PLANT MATERIAL



FREQUENT REJECTION AREAS

PLEASE REMOVE...

- > **ALL PERSONAL EFFECTS FROM THE GLOVE COMPARTMENT, SEAT POUCHES, FRONT AND REAR DOOR COMPARTMENTS, TRUNK AND ANY OTHER COMPARTMENTS. THIS INCLUDES ALL AIR FRESHENERS AND PERSONAL ITEMS THAT HANG FROM REAR VIEW MIRROR.**

VACUUM....

- > **ENTIRE CAR...UNDER AND BETWEEN ALL SEATS, BETWEEN THE SEAT AND SEAT BACKS. ALL STORAGE COMPARTMENTS SUCH AS GLOVE COMPARTMENT, SEAT POUCHES, DOOR PANEL COMPARTMENTS, TRUNK AND ANY STORAGE DRAWERS UNDER SEATS
SPARE TIRE AND SPARE TIRE COMPARTMENT MUST BE CLEANED AND VACUUMED OUT.**

POV'S MUST HAVE ¼ TANK OF GAS ONLY



YOUR POV WILL BE REJECTED IF YOU HAVE MORE THAN ¼ TANK OF GAS

EPA – ENVIRONMENTAL PROTECTION AGENCY

YOUR CAR HAS TO HAVE AN “EPA” STICKER. THIS MUST BE LOCATED SOMEWHERE IN THE ENGINE COMPARTMENT (USUALLY BY THE TOP LEFT CORNER OF THE ENGINE.)

VERY IMPORTANT: IF THE STICKER IS MISSING THE FOLLOWING IS NEEDED:

THE POV OWNER MUST OBTAIN A LETTER FROM THE MANUFACTURER STATING THAT THE ENGINE IS E.P.A. CERTIFIED (STATING ENGINE #) AND THAT CATALYST MEETS U.S. STANDARDS. IN ADDITION TO THIS LETTER A MEMORANDUM MUST BE PROVIDED FROM MEMBER/CIVILIAN, STATING WHY THE STICKER IS MISSING OR UNREADABLE.

EXAMPLE OF A EPA STICKER



EXAMPLE OF DOT STICKER



DOT – DEPARTMENT OF TRANSPORTATION

THE “DOT/MANUFACTURER STICKER” MUST BE LOCATED ON THE DRIVER SIDE DOOR FRAME. ON A 4 DOOR CAR IT MAY BE LOCATED BETWEEN THE TWO DOORS. THE STICKER READS EITHER:

“THIS VEHICLE CONFORMS TO ALL APPLICABLE FEDERAL SAFETY BUMPER AND ANTI THEFT STANDARDS – (AND/OR) – THE MANUFACTURER’S DATE

EPA TEL: (202) 564-9328

DOT TEL: (202) 366-5291

Email: <http://www.epa.gov>

Email: <http://www.dot.gov>

VERY IMPORTANT:

IF THE DOT STICKER IS MISSING, THE POV OWNER MUST OBTAIN A LETTER FROM THE MANUFACTURER STATING THAT THE PARTICULAR POV (CAR, CHASSIS NUMBER IS IMPORTANT) MEETS THE UNITED STATES SAFETY REQUIREMENTS AND THAT THE CAR WAS MANUFACTURED FOR U.S.USE. IN ADDITION A MEMORANDUM MUST BE PROVIDED BY THE MEMBER/CIVILIAN, STATING WHY THE STICKER IS MISSING OR UNREADABLE.

